



CMEX
Digital USB-2 cameras
ImageFocus v2
Analysing Software



The Euromex CMEX camera family and ImageFocus analysing software provide a perfect solution for modern digital microscopy for teaching, basic industrial applications and demanding amateurs. The cameras are made to be used with biological, metallurgical and stereomicroscopes

CMEX DIGITAL CMOS COLOUR CAMERAS

	CMEX-1300x	CMEX-5000
Sensor	1/3" CMOS	1/2" CMOS
Pixels	1,3 megapixels	5,0 megapixels
Max output pixels	1280 x 1024	2592 x 1944
Pixel Size	3,6 µm × 3,6 µm	2,2 µm x 2,2 µm
Frame Rate :	from 2 up to 15 f/s	from 2 to 12 f/s
Signal/Noise ratio	44 db	41 db
Dynamic range	> 71 db	> 60 db
Objective	0.65 x	0.65 x
Objective mount	C and CS mount	C and CS mount
Interface	USB 2.0 (480 Mb/s)	USB 2.0 (480 Mb/s)
Article no	DC.1300x	DC.5000



The DC.1300x and DC.5000 is delivered with a calibration slide 1 mm/100 and two 30/30,5 mm adapters for stereo microscopes

High sensitivity camera features, suitable Bright Field, Dark Field, Phase Contrast, Epi-illumination
 Very convenient to use, fits a standard 23.2 mm trinocular tube or eyepiece tube. Supplied with USB 2.0 cable.
 To be used with Euromex ImageFocus software, which can be freely downloaded. The software works solely with CMEX cameras captured images. The CMEX cameras are supplied with a robust carrying case

Options :

DC.1330	30 mm adapter for stereo microscopes	DC.1335	30,5 mm adapter for stereo microscopes
AE.1110	Calibration slide 1 mm/100 divisions	AE.1111	Calibration slide 2 mm/100 divisions
AE.1112	Calibration slide 50 mm/500 divisions	DC.1311	ImageFocus software on CDROM
DC.1320	Objective 1x for DC.1300x and DC.5000	DC.1315	ImageFocus Stacking software (1)
		DC.1316	ImageFocus Stacking software Pro (2)

(1) ImageFocus® Stacking software is the perfect digital image processing software which combines multiple images taken at different focus distances to create a resulting image with a greater depth of field than any of the individual source images

(2) ImageFocus Stacking software Pro extra features:

- retouching brush to clone pixels from source to resulting image
- batch mode to process multiple images stacks

ImageFocus v2 ANALYSING SOFTWARE

View & capture of live images (single shot and interval capturing modes)

Save images in TIFF(*), JPEG(*), BMP, GIF, PCX, PNG formats (* required formats for measuring function)

Annotate images with text and labels and compare images. Print function

Calibration function of microscopes objectives & camera

Perform measurements (linear / rectangle / ellips / angle / free form) and Vickers Hardness calculation

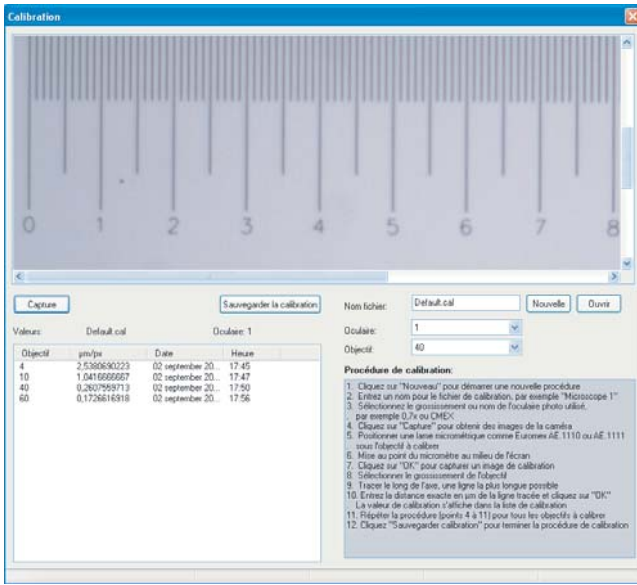
Perform particle counting on saved images (10 counters)

Camera functions :

White balance	Auto white balance function
Exposure time	Auto / manual
RGB control	Individually adjustable
Sensitivity-Gain	Adjustable
Colour modes	Colour and black & white
Settings	Save and Retrieve function

Minimum system requirements :

- Pentium IV 1,7 GHz for best performance
- Minimum 512 Mb Memory and 50 Mb free hard disk space
- One available high speed USB 2.0 port
- Graphic card true colours
- Microsoft Windows 2000 or Windows XP (recommended) or Windows Vista



Calibration

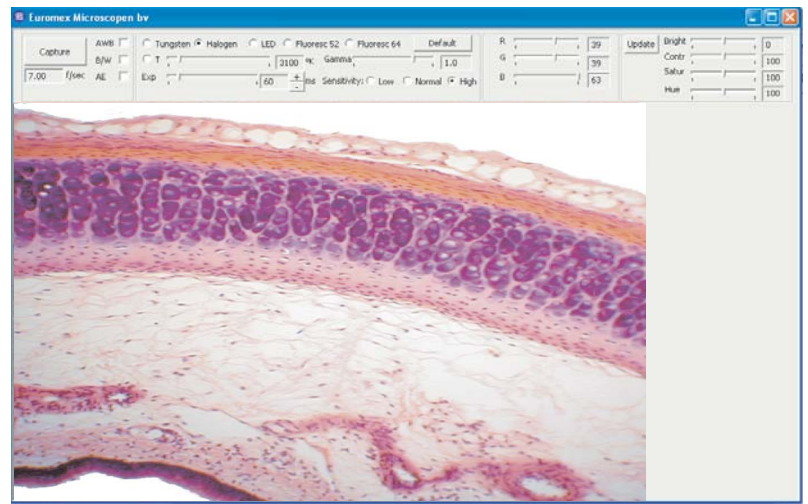
An intuitive calibration procedure allows the user to calibrate each objective of the microscope. This enables the user to perform accurate measurements on captured images. The accuracy of the measurements is 0,1µm

Camera control

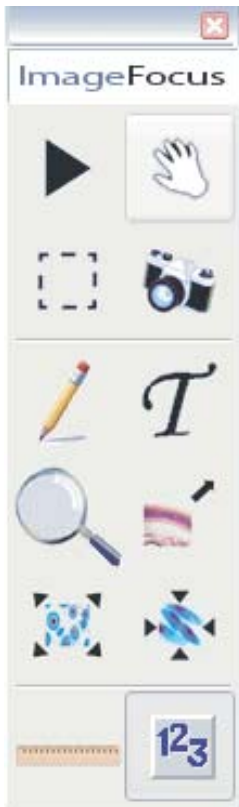
The user can easily control all features of the camera. Adjust sensitivity, use presets, adjust the RGB colors, adjust exposure time and white balance. Select B/W or colour mode. Camera parameters can be easily saved and retrieved

Easy to use, multifunctional toolbar

View live images



Select / Deselect



Move

Capturing

Text functions

Full screen

Best fit

Counting

Area selection

Drawing

Zoom

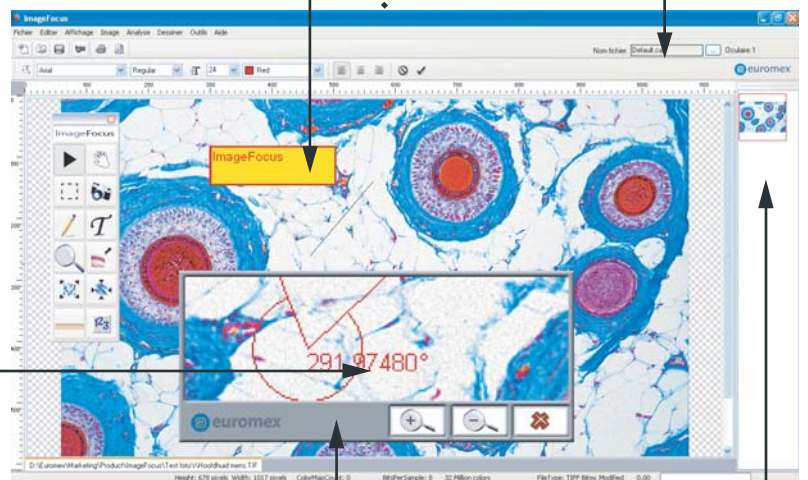
Original size

Measuring

Annotate images with text and labels

Multiple calibration files

Perform measurements (angle, line, ellips, rectangle, free form) and export results to an excel file



Editing of multiple images

Zoom function

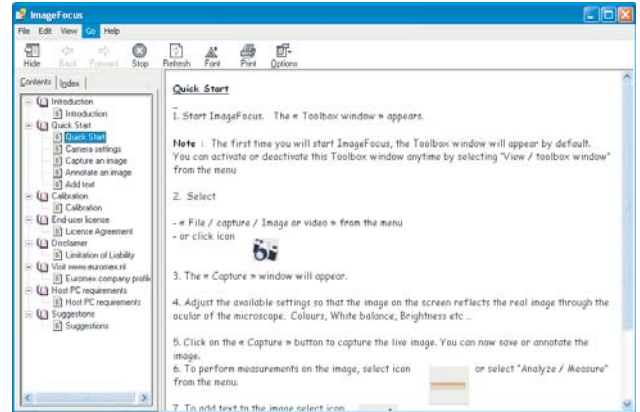
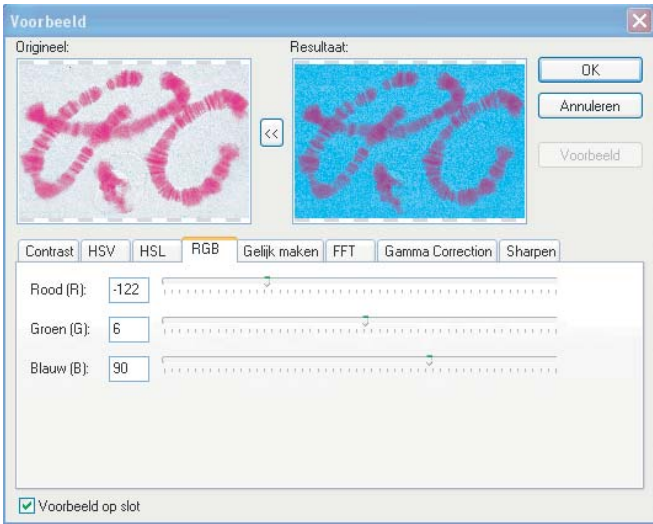
Multiple slide navigator

Image enhancements

The adjustment functions allow the user to perform enhancements like contrast, HSV and HSL values, RGB space, FFT analysis, gamma correction and sharpening on images

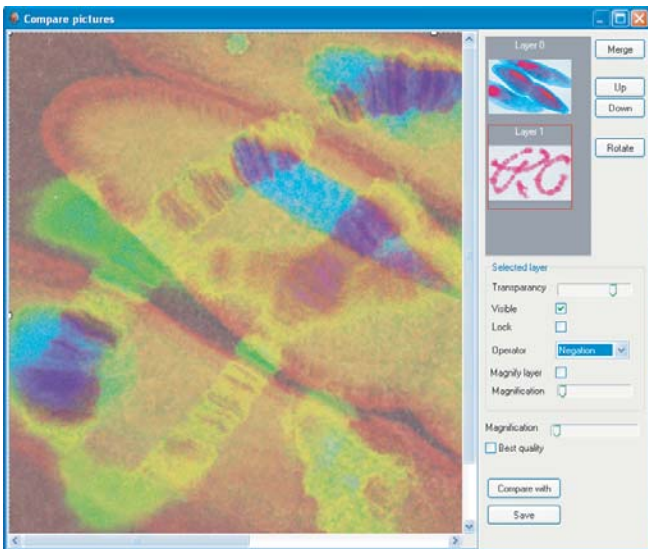
Menus and Help files in several languages

The user can select several languages for the menus and help files

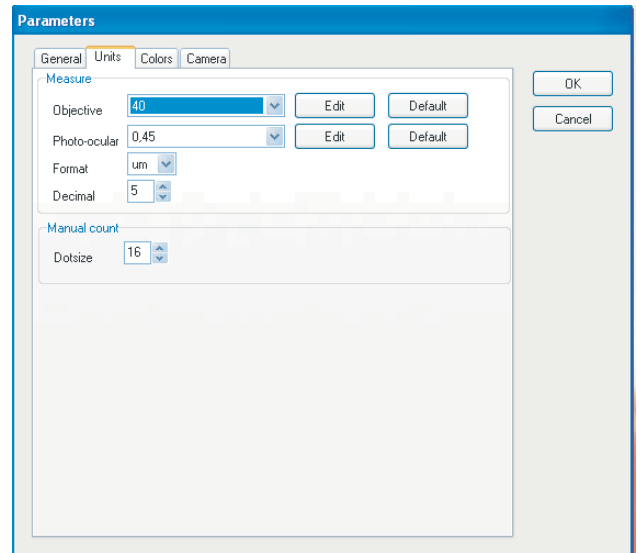


Compare function

Two images can be compared in order to detect differences of structures



Default parameters



Printing of images

The preview and print function allows printing of high resolution images @ 300 dpi



euromex microscopen bv
Papenkamp 20
P.O. Box 4161, 6803 ED Arnhem
The Netherlands
T +31(0)26 323 22 11
F +31(0)26 323 28 33
info@euromex.com
www.euromex.com